



News from the International HPH Network

The Swedish HPH Network: From a single Pilot Hospital to a Network of networks

This year, the 21st International HPH Conference takes place in Gothenburg, Sweden. For that occasion, we would like to introduce the Swedish HPH Network and their important work on strengthening the focus on health promotion in Sweden.

About the NETWORK

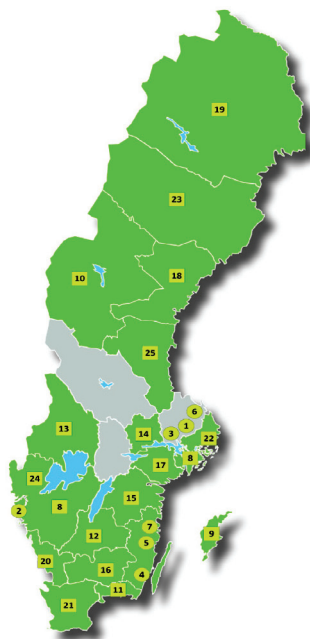
The Swedish HPH Network has existed since 1995 and has today a total of 84 members nationwide.

The network have had financial support from the Swedish Ministry of Health & Social Affairs for several years.

Contact:

Swedish HPH Coordinator
Margareta Kristenson
margareta.kristenson@liu.se

Swedish HPH Network members 2013



○ Separate hospitals/health services
■ Entire county councils

The Swedish HPH Network

The Swedish HPH Network was established in 1995, when the European Pilot Hospital Project of Health Promoting Hospitals (EHPH) ended its two-year process. Sweden took part in this project through the University Hospital in Linköping, being one out of 20 pilot HPH hospitals. The secretariat has, from the beginning of the network, been in Linköping at the Public Health Centre in Östergötland.

The number of members has increased steadily over time, at first slowly, and then more rapidly during the later years. Today the network includes almost all of Sweden, as 18 of 21 county councils/regions are members. As for one of the three “absent” counties, all hospitals and the full primary care are members of the network and in total, the Swedish HPH Network comprises 84 hospitals and primary care organisations.

The Swedish Model

The Swedish HPH Network builds on regions/county councils, and only a few hospitals/primary cares are registered as “individual” members. As regard of the International HPH Network, all Swedish members are registered as members of the Swedish Network and all are paying the international member fee.

The choice of using regions as members was made by the members themselves, based on the experience that governance is so central for a hospital/primary care to have the possibility to develop; i.e. as

single members, managers sometimes felt that they were not “allowed” to work in a health orientation. Having regions as members means that the decision to become member lies at the highest political level, and that membership is a means for politicians to get help with the development of health services.

The county approach also enhances a strong collaboration across sectors, i.e. between hospitals within the county and between hospitals and primary care. This has been evident in new applications from counties where there used to be only single hospital members. The new applications encompasses “cross county projects”; such as the development of a smoke free politic for all hospitals and clinics. Also, being member as a county means that the member comprises those who define the agreements and purchasing system, which gives possibilities to collaborate in the development of these agreements.

When regions and not hospitals/primary care organisations are networking, you could of course be running the risk that the development moves away from the hospitals and clinics and becomes only bureaucratic. To avoid this, the Swedish Network supports that each member has several process leaders and that local networks have been built up within each region. Thus the Swedish HPH Network is a network of networks. National meetings are organised for the different groups: At the General Assembly, the directors of the counties or hospitals/

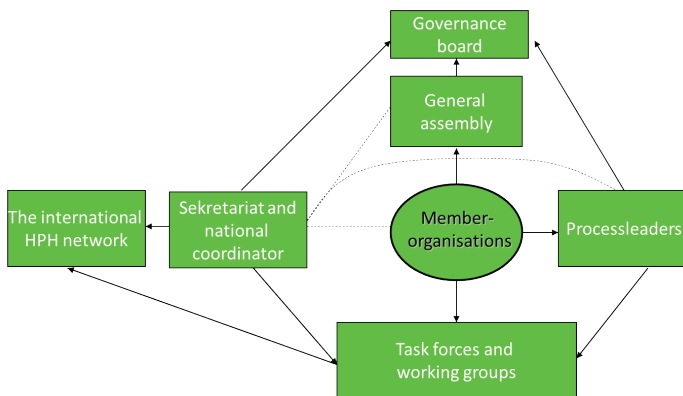


News from the International HPH Network

primary care organisations meets biannually. At the GA large members have more votes.

In parallel, the process leaders meet more often, and at these meetings each member can send several process leaders. Moreover, all members are encouraged to participate in the different task forces.

Organisational structure of the Swedish HPH network



Task forces

HPH is a comprehensive concept based on a holistic view on health and on the objective of health services. The Swedish HPH Network has been built on this holistic approach and therefore by May 2013 have 12 task forces: Health promoting encounters, Tobacco prevention, Alcohol prevention, Health promoting nutrition, Physical activity, Health promoting care environment, Mental health, Health promoting work environment, Accident prevention, Patient Reported Outcome Measurements, Health promoting primary care, Management and purchasing systems, and Indicators for HPH.

The task forces are the core of the HPH network and are based on active members driving the development in their respective area; hereby focusing on creating learning opportunities. Thus, seminars and workshops are central ways of working, along with the website, where each task force has their own page, which is an important tool to disseminate information and material.

Influence on national decision and support from national decisions

The Swedish HPH Network has close contacts within several national agencies. One very important development was in 2003, when the Swedish Government decided on national targets for public health. One sub-target (no 6) is: "A more health promoting health service." The background text alludes to the International HPH

Network initiated by WHO and the content of this target is very similar to the aims of the Swedish Network.

The network has participated in the development of the national guidelines in Sweden for lifestyle intervention. The Swedish HPH national coordinator has acted as a medical adviser and is also responsible for the development of employed indicators in this work. The Swedish HPH Network is now an important part of the implementation of these guidelines, in collaboration with all national agencies, incl. the professional organisations for instance for physicians and nurses. The Swedish HPH Network has benefitted strongly from a large financial support from the Swedish Ministry of Health and Social Affairs over the course of five years. Besides the financial part, the official acceptance and appreciation of the work done by the Swedish HPH Network is of great value.

Challenges met and overcome in the network

One major challenge is to integrate health orientation into the ordinary management of hospitals/primary care. A solution on how to overcome the challenges is arguing that the HPH concept is an important way of using the resources in health services most effectively.

The Swedish HPH Network has worked together with health economists to develop a "health calculator", which can estimate the future costs - both financially and in regards to ill-health - if nothing is done about lifestyles. The involvement of managers in seminars, the link to ordinary quality assurance, and evidence-based medicine is of importance, as are the discussions with purchasers.

The future of the Swedish Network

The network believes that a linking to ordinary systems is fundamental to the long-term survival of the network; and ideally, the concept is a natural part of the vision and mission of health services. There is still some way to reach to this point. One step is a discussion on how to link the network more firmly to the SALAR (Swedish Association of Local Authorities and Regions), as this is the organisational body with the mandate for the coordination of these regions. In this work, a focus on Equality in health and in health care are prioritised. The Swedish HPH Network emphasises their delight of the national and cross-sectorial acceptance of the fact that a focus on health promotion and disease prevention can help reduce inequality in health and in health care.



News from the International HPH Network

IHF and HPH have signed Memorandum of Understanding

About the IHF

IHF is the global association of health care organizations and it develops and maintains a spirit of cooperation and communication among hospitals and health care organisations, with the primary goal of improving the health of society.

IHF website: www.ihf-fih.org

To read more about the IHF Conference please visit: www.oslo2013.no

Contact:
IHF secretariat
info@ihf-fih.org

For more information about the pre-conference “Innovative Value-adding Hospital Management in an NCD Era: Act NOW” please contact:

Michelle, Miauh-Shin Chen
mhc@bhp.doh.gov.tw

The proposed and agreed Memorandum of Understanding between the International Hospital Federation (IHF) and the International HPH Network (HPH) is now signed. The collaboration was initiated by CEO of IHF, Eric de Roodenbeke and Chair of HPH, Dr. Shu-Ti Chiou.

At two online meetings in the spring of 2013, Eric de Roodenbeke and CEO of the International HPH Secretariat, Hanne Tønnesen discussed the future collaboration and new mutual projects. The meetings highlighted a list of overlapping focal points, and the possibility of a mutual research project on identifying health promoting activities in European countries was outlined.

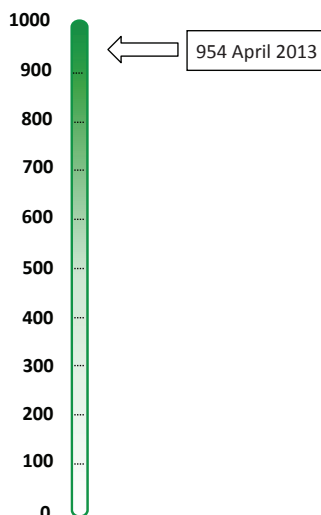
The collaboration between HPH and IHF will primarily focus on communication and capacity building.

Part of the action plan for communication is a co-written article about the importance of having a policy for health promotion with information on the out-

come of implementing HP in practice and the financial benefits of such activities.

As part of the action plan for Capacity Building, it was decided that IHF and HPH will participate in each other's main conferences in 2013. At the 21st international HPH Conference in Gothenburg, Eric de Roodenbeke is invited as keynote speaker to give a presentation of IHF with a special focus on how IHF and HPH can join force in enhancing the importance of implementation of health promotion in hospitals and health services. HPH will participate in the IHF conference in Oslo, June 18-20, and host a pre-conference titled “Innovative Value-adding Hospital Management in an NCD Era: Act NOW” at the conference venue on June 17.

In the long run, both HPH and IHF see many beneficial outcomes of the established partnership and anticipate a fruitful collaboration.



Member update: The International HPH Network now totals 954 members

If your hospital or health service is interested in joining the International HPH Network, go to HPHnet.org and find more information about what HPH can do for your organisation and why Health Promotion in Hospitals and Health Services is vital for the improvement of health for patients, staff and community.

In the ‘Members’ section at HPHnet.org you will find all information required for membership.

For further questions about the HPH Network, feel free to contact the secretariat: info@hphnet.org.